



A quoll is on Green Corridor Logo because they have been seen in the Mt. Sugarloaf hinterland



INFORMATION GUIDE FOR SUBMISSIONS

505 MINMI ROAD, FLETCHER

After more than 40 years of rezoning land in the “Wallsend to Minmi Urban Growth Corridor” in Newcastle’s Local Government Area, 505 Minmi Road, Fletcher is now singly unique - so the NSW government has the environmental and social responsibility to PROPERLY PROTECT.....

-the last land left in the Urban Growth Corridor not rezoned for housing.
-the last land left in the Urban Growth Corridor entirely covered by maturing regrowth forest.
-the last land left in the Urban Growth Corridor that is a vegetated buffer.
-the last land left in the Urban Growth Corridor whose unpolluted water catchment flows into the internationally significant wetlands.
-the last land left in the Urban Growth Corridor that forms a *Wildlife Corridor* connecting the Government-owned *Blue Gum Hill Regional Park* to the *National Parks Estuary Wetlands* and the *National Parks Stockton Watagans Regional Biodiversity Corridor*.

Weighed against all this are only 110 houses.

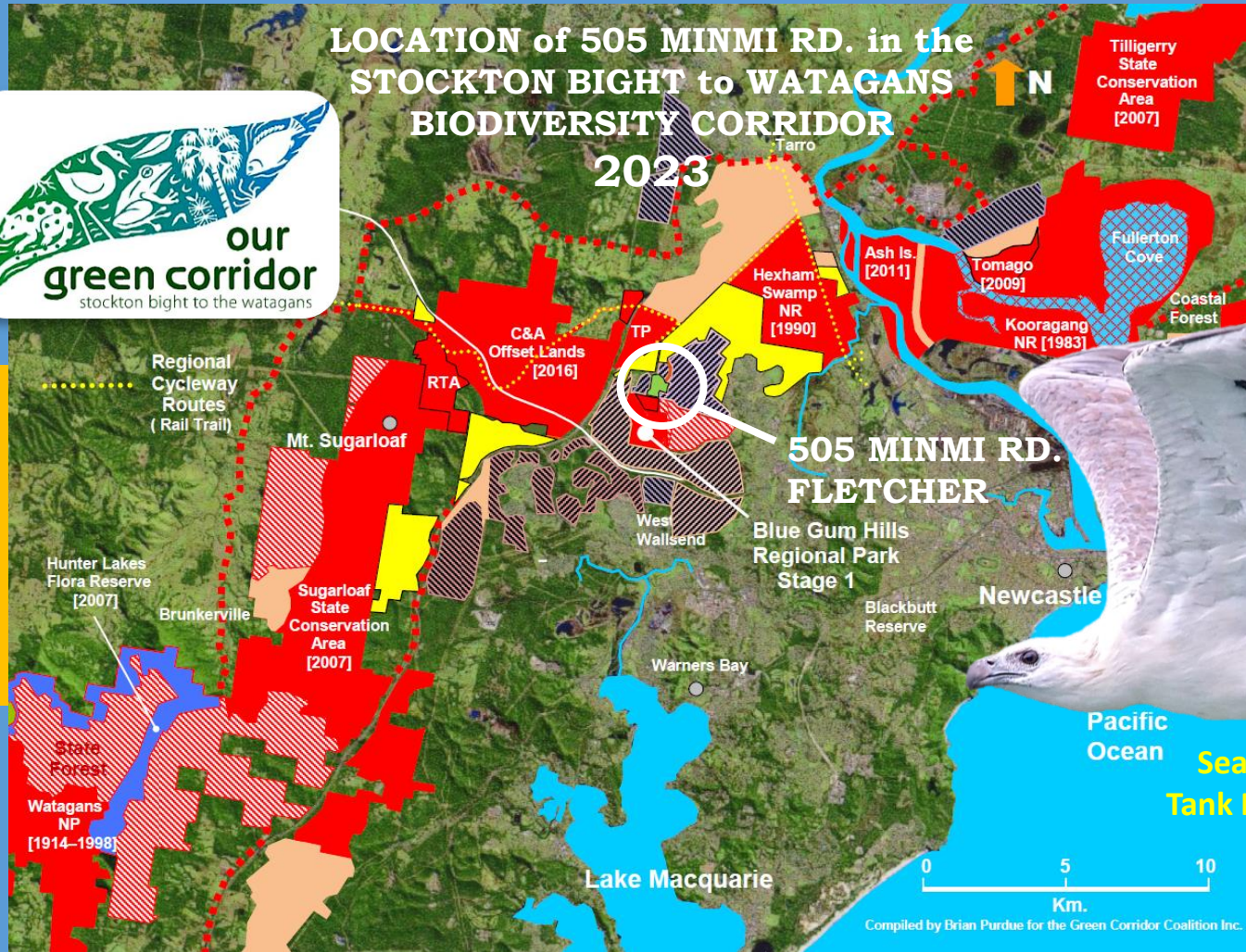
PLEASE MAKE A SUBMISSION SUPPORTING INCLUSION OF THIS NATIONAL PARKS CONNECTING CORRIDOR IN THE NATIONAL PARKS ESTATE

PLEASE FULL SCREEN

WILDLIFE CORRIDOR BACKGROUND - 505 MINMI ROAD

Extract from 2003 Green Corridor Coalition "Vision Statement"

"Conservation and, where needed, revegetation of the transitional ecosystems between the wetlands and the forests, including the strategically-important "Tank Paddock", the Pambalong Swamp Nature Reserve and the connecting areas to the Blue Gum Hills Regional Park".

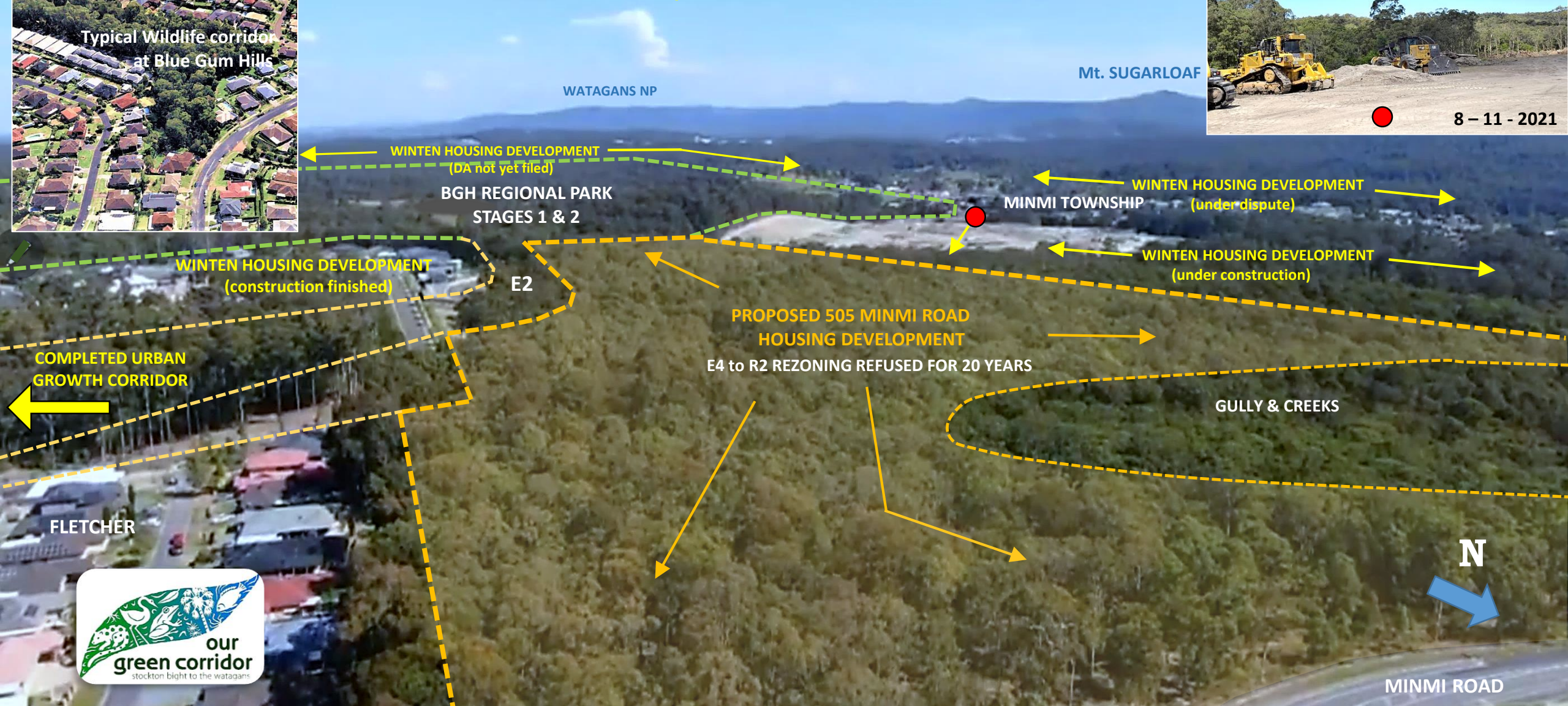
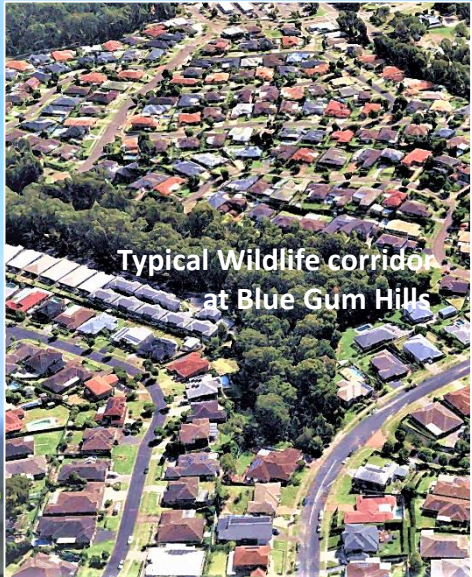


The coalition's advocacy supported the 2005 council-identified Coal & Allied corridor land but in 2010 when this was rezoned for housing 505 Minmi Road, Fletcher became the only non-residential zoned land that connects to the Blue Gum Hills Regional Park.



APPROVED WINTEN & PROPOSED 505 MINMI ROAD HOUSING DEVELOPMENTS

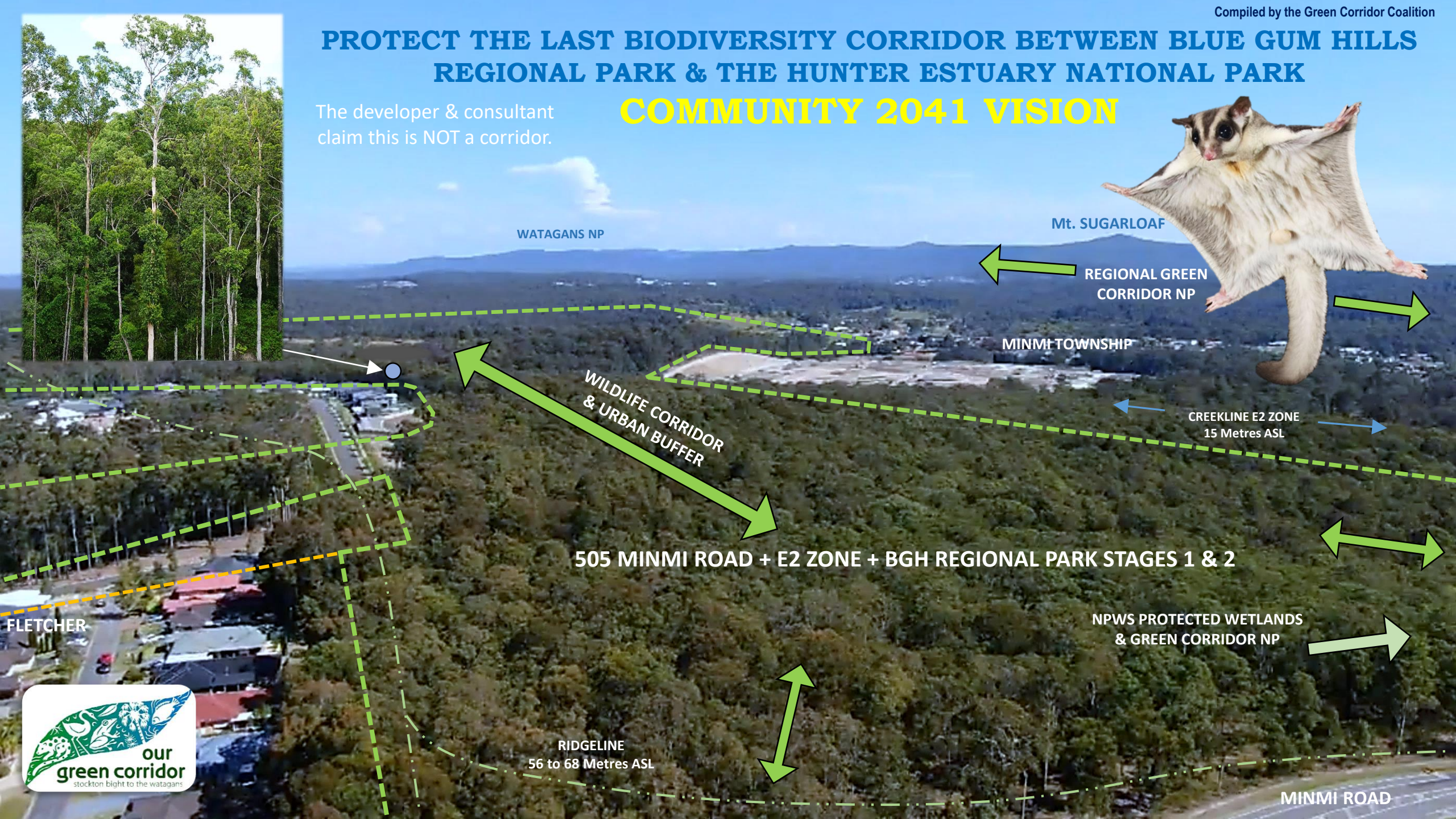
STATE GOVERNMENT REGIONAL PLAN 2041 VISION



PROTECT THE LAST BIODIVERSITY CORRIDOR BETWEEN BLUE GUM HILLS REGIONAL PARK & THE HUNTER ESTUARY NATIONAL PARK

COMMUNITY 2041 VISION

The developer & consultant claim this is NOT a corridor.



WATAGANS NP

Mt. SUGARLOAF

REGIONAL GREEN CORRIDOR NP

MINMI TOWNSHIP

CREEKLINE E2 ZONE
15 Metres ASL

WILDLIFE CORRIDOR
& URBAN BUFFER

505 MINMI ROAD + E2 ZONE + BGH REGIONAL PARK STAGES 1 & 2

NPWS PROTECTED WETLANDS
& GREEN CORRIDOR NP

RIDGELINE
56 to 68 Metres ASL

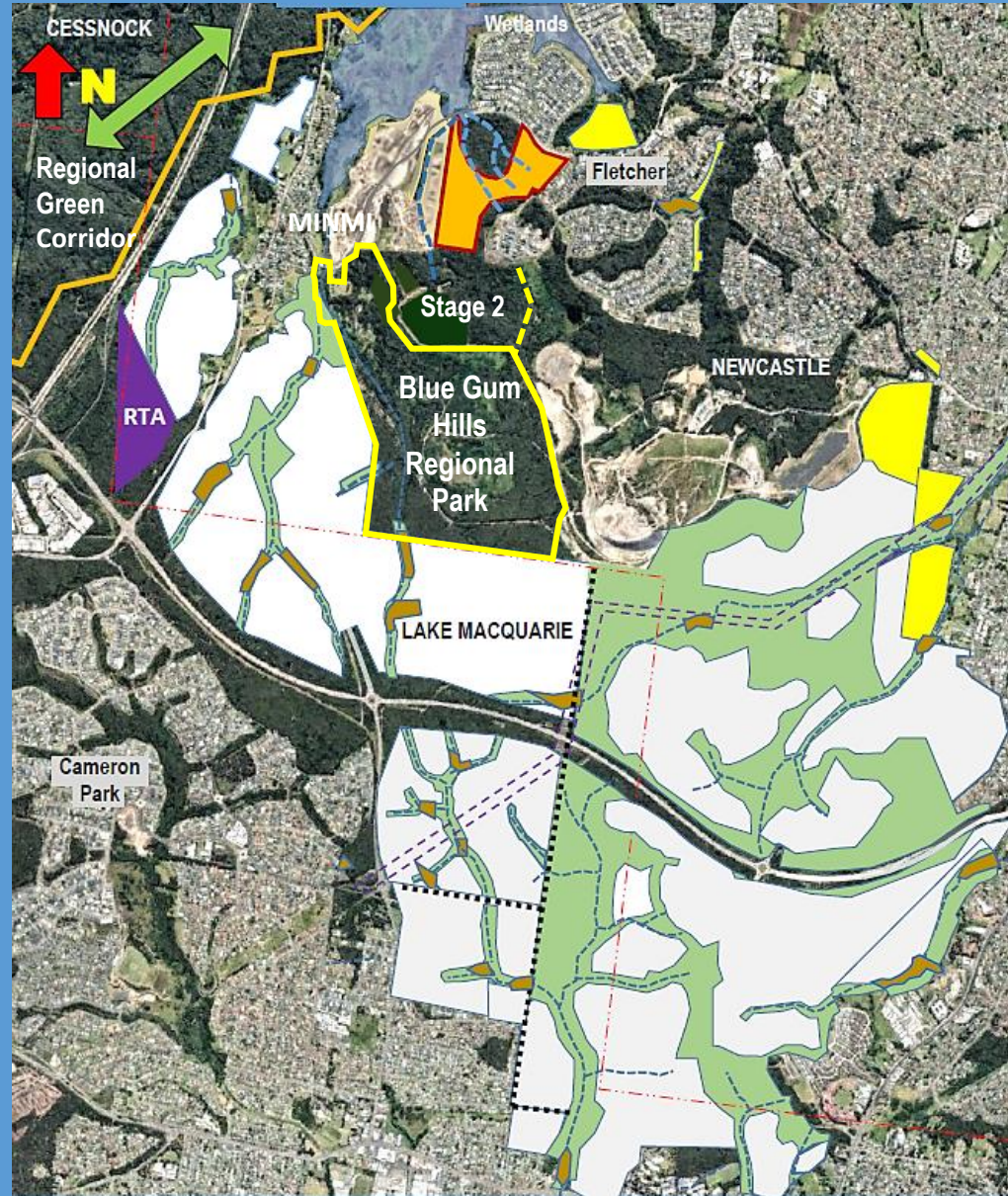
MINMI ROAD

FLETCHER

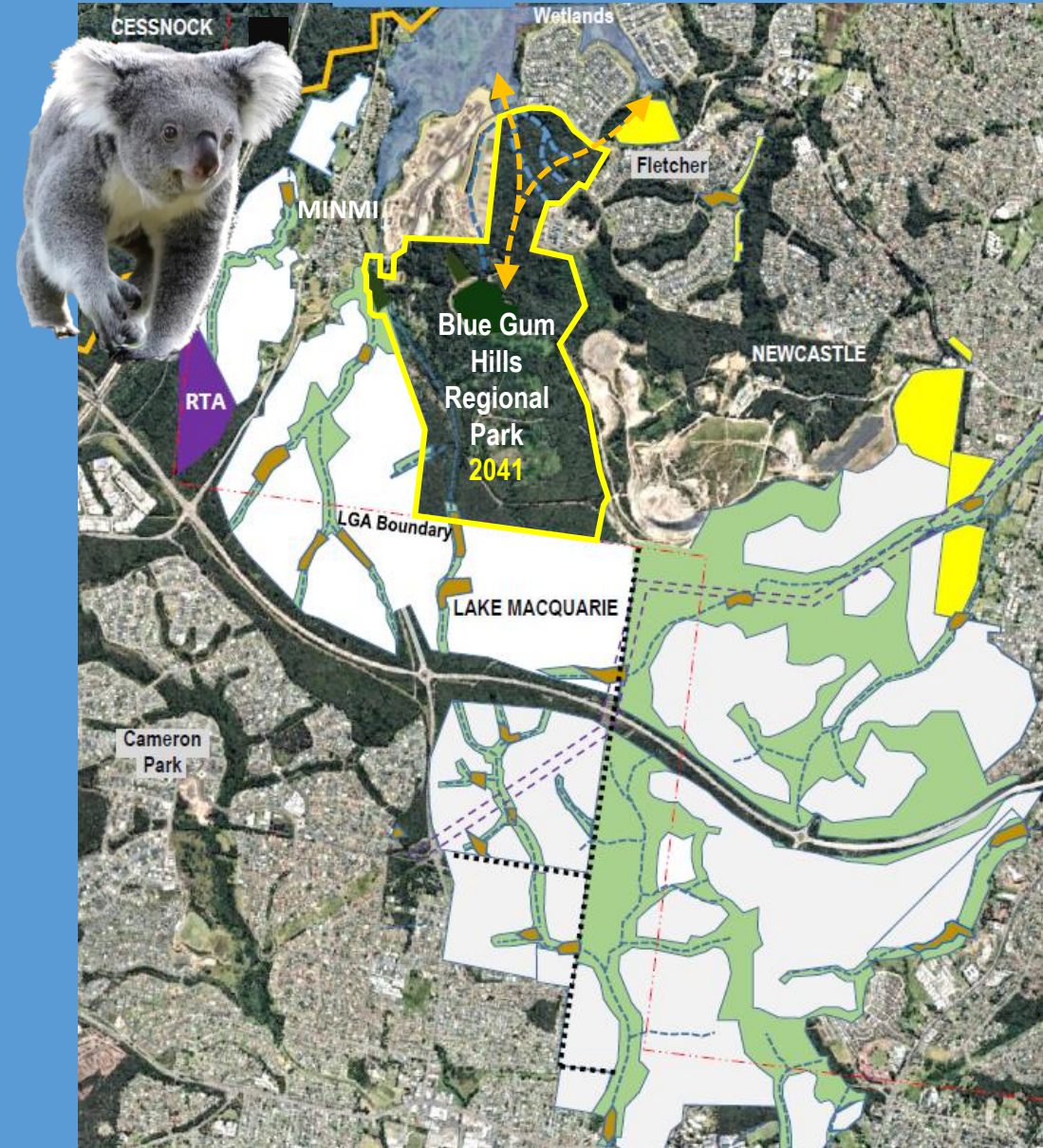


VIEW OF VISIONS

STATE GOVERNMENT VISION FOR REGIONAL PARK 2041



COMMUNITY VISION FOR REGIONAL PARK 2041



A Koala colony has been recorded at Stockington just west of Minmi in National Park

PROTECT THE LAST MATURE NATIVE REGROWTH FOREST 505 MINMI ROAD, FLETCHER

Substantial regrowth has happened over the two decades of attempted development of this site which has increased the ecological values of this now unique wildlife corridor and will continue to increase into the future



2004

Forest vegetation is sparse in most areas



2013

Forest vegetation thickening is apparent



2022

Zoned for infill housing

Marked overall increase in density of regrowth can clearly be seen as well as the filling in of all thinly vegetated areas

**PHOTOS
OF
505 MINMI
ROAD
BUSHLAND
TAKEN IN
2011**

As shown in
previous slide
there has been
substantial
regrowth since
2011



Black cockatoos
inhabitat the area
along with around
150 other bird
species



IN CLOSING

**Please make a submission &
ask the obvious question.**

**Why is there still support for
the development of 505 Minmi
Road when the community
would lose so much for so little
addition to the housing
shortage?
(110 houses)**